



Cricklade, Purton and Royal Wootton Bassett Community Policing Team Update



Hello and welcome to this Community Policing Team report.

The purpose of these reports is to provide a short summary of the local issues in your area. Engaging with the public is vital for us as. Not only does it give us an opportunity to share what we are doing and keep our communities informed and up to date but it also provides an opportunity for our communities to feed back to us; what we're doing well, where we can make improvements and how we can work together to tackle local issues.

We hope you find these updates useful, for the latest news, crime prevention advice and appeals please follow us on:

Twitter <https://twitter.com/wiltshirepolice>

Facebook <https://www.facebook.com/wiltshirepolice/>

Or sign up to Community Messaging <https://www.wiltsmessaging.co.uk/>

Thank you for your continued support to Wiltshire Police.

**Crimes that have an impact on the community
reported between 1st November 2017 and 2nd January 2018**

- ◇ On the 7th November at around 02:00 unknown suspects have forced entry to Bradon forest School, Purton however left without taking any items.
- ◇ Between 07:00 on 5th November and 21:00 on the 7th November unknown suspects have attempted to break in to St Mary's church in Cricklade however have been unsuccessful.
- ◇ Between 19:00 on the 19th November and 07:00 on 20th November unknown suspects have entered an insecure garage at a property in Squires Hill, Royal Wootton Bassett, made a search but not stolen anything.
- ◇ Between 16:45 on the 20th November and 08:30 on the 21st November unknown suspects have forced entry to a building site at The Hyde, Purton made a search of the site but not stolen anything.
- ◇ Between Midnight on the 19th November and Midnight on the 20th November unknown suspects have entered the victims shed at an address on High Mead, Royal Wootton Bassett and stolen a wireless speaker valued at £300.
- ◇ At approximately 11:00 on the 26th November unknown suspects have used a pick axe to gain entry to a barn situated at an address at The FORTY, Cricklade, stolen £2000 of game fowl and caused £500 worth of damage.
- ◇ Between 23:00 on the 3rd December and 07:30 on the 4th December unknown suspects have accessed a conservatory at an address on Baliffs Piece, Cricklade, and stolen a purse from within a handbag.
- ◇ At approximately 07:15 on the 6th December unknown suspects have entered a Business premises on the parade, Purton via climbing on to the roof and forcing entry, they have stole £850 in cash before making away from the scene.
- ◇ Between 06:30 and 20:30 on the 18th December unknown suspects have forced entry to a property on Preston Lane, Royal Wootton Bassett and stolen various items including jewellery and a laptop.
- ◇ Sometime on the 18th December unknown suspects have driven a ford transit van on to Windmill Hill Business park, Royal Wootton Bassett and stolen JCB concrete breaker from one of the business units.
- ◇ Between 13:30 and 19:00 on the 21st December unknown suspects have entered the victims address in Hook via a rear patio and stolen various items of Jewellery from within.

CONTROL STRATEGY

Below is our control strategy for your reference. This focuses on where how we conduct our operational Policing based on the Police & Crime Plan. We will continue to align our resources with the threat/harm/risks presented in line with the control strategy.

Domestic abuse, Cyber Crime, Organised criminality, County lines and the criminally exploited, Dangerous and persistent offenders, Child sexual exploitation and abuse, Modern slavery and human exploitation.



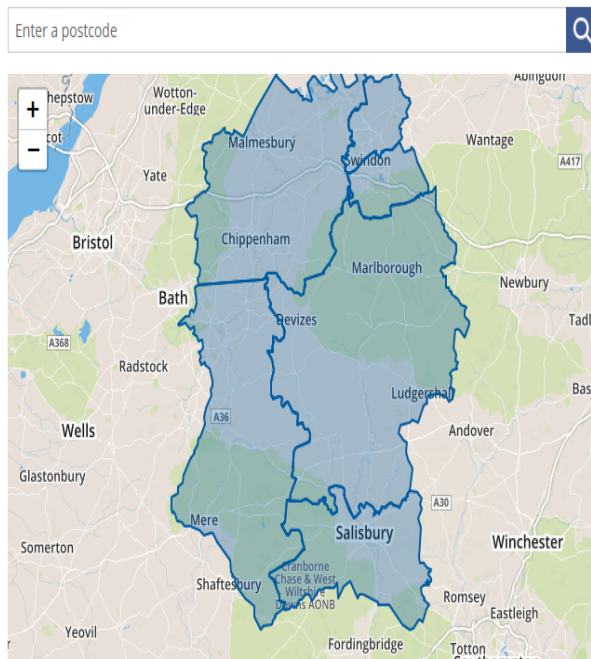
Wiltshire Police New Website Launched

On the 12th December Wiltshire Police launched its new website and I would encourage you all to take a look. Whilst the above summary gives an overview of Key Impact crimes in your area such as Burglaries and Thefts the interactive element of the website will allow you to see the stats of reports in your area and your local police contacts.

The website address remains unchanged and the interactive map can be found by following the below link.

<http://wspol-prd.storm50.com/article/832/Your-Area>

Click on your area below or enter your postcode to find local news, crime stats for your area and who your local officers are.



Community Policing Teams

Links

Swindon North

Swindon South

Wiltshire East

Wiltshire North

Wiltshire South

Wiltshire West

**You didn't think the morning after
could get any worse...**

You were wrong!

#SafeSeason

DRINK*DRIVE *Consequences*

- ★ Increase in car insurance costs
- ★ Job loss
- ★ Trouble getting in to countries like the USA
- ★ The shame of having a criminal record
- ★ Loss of independence

Local Priorities

The priorities, in the most simplistic form, are what officers are expected to be doing, and where they should be patrolling, when they are not responding to ongoing crimes or incidents, or not carrying out enquiries relating to those crimes and incidents.

The priorities are set every week and may be long term or short term. They are decided upon by Police Sergeant and Inspector using various information.

The priorities for the whole of this Community Policing Team in the Malmesbury and surrounding areas between July and August have included

- * Targeted patrols surrounding reports of thefts from motor vehicles and burglaries.
- * Pro active work to combat road related issues at both Minety and Hook Street.
- * Targeted patrols with regards to the Drink Drive campaign



The link below is for Community Messaging. The Community Coordinator for this area sends out a daily message, if there has been any crime that will benefit the community to be aware of. This includes thefts, scams and burglaries, the aim is to inform you of what is happening in your area, help you take any actions to avoid becoming a victim of crime and to alert you as a potential witness to any crime. Its easy to sign up and only messages, relevant to your area, are sent to your email inbox.

<https://www.wiltsmessaging.co.uk/>

The email address for the Wiltshire North Community Policing team is
northwiltshirecpt@wiltshire.police.uk
Please phone 101, or 999 in an emergency to report any incidents or
crimes

This report has been prepared by PC 2608 Stuart Welch



